

## CONVECTION FLOW SERIES GAS DECK OVENS



251 with optional casters

### Specifications

Bakers Pride® Super Deck Convection Flow gas Deck Ovens are designed for high volume pizza and all-purpose operations.

Ovens may be stacked three high. Oven exteriors are all heavy-gauge, stainless steel and are fully insulated for cooler outer temperatures and consistent interior temperatures

Interior oven frame is constructed of ¼" (6mm) heavy-duty angle iron frame, completely welded to form a single, unitized section. The oven body and lining are then welded to the framework.

Oven interiors are manufactured of high-heat resistant aluminized steel. Doors are fully insulated, spring balanced with tubular steel handles and will remain open or closed until moved.

Convection Flow Series features a 300°-650° F (149°-343°C) throttling thermostat, 8" (203mm) interior deck heights with 1 ½" (38mm) thick Cordierite hearth decks (steel decks optional) and are supported by a ¼" (6mm) angle iron frame.

Combination gas control incorporates a manual gas valve, pilot safety and pressure regulator. Easily removable, slide-out, heavy-duty flame diverters distribute the burner flame uniformly in the burner chamber. A ¾" (19mm) NPT gas connection is located on the left side and left rear of oven – operator/installer may choose.

Heavy-duty, 7 gauge hot rolled steel legs are standard and finished with durable Bakertone.

2 year limited parts and labor warranty standard.

### Gas Deck Ovens

<u>Single</u>	<u>Double</u>	<u>Triple</u>
251	252	253
351	352	353
451	452	453

### Standard Features

- Model 251 features 60,000 BTUH per deck in natural or LP
- Model 351 features 70,000 BTUH per deck in natural or LP
- Model 451 features 80,000 BTUH per deck in natural or LP
- 300°-650° F (149°-343°C) throttling thermostat
- Top and bottom heat control dampers
- Combination gas controls with valve, regulator & pilot safety
- Heavy-duty, slide-out flame diverters
- 8" (203mm) interior deck heights with 1 ½" (38mm) thick Cordierite hearth decks
- All stainless steel exteriors
- Aluminized steel interiors
- Spring balanced, fully insulated doors
- Side or rear gas connections
- 7 gauge legs
- Fully insulated throughout
- 2 year limited parts and labor warranty

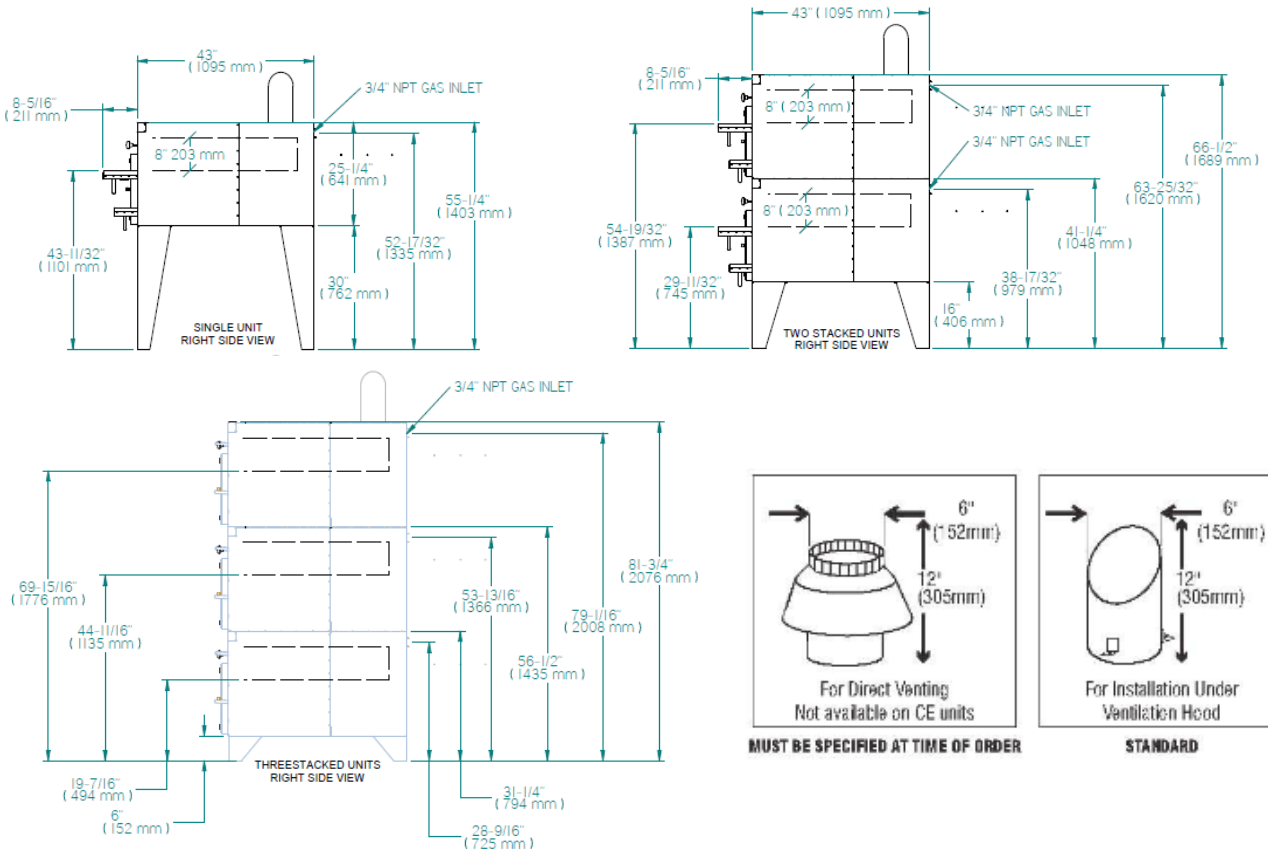
### Options & Accessories

- Steel Decks
- Lightstone decks
- Set of 4 casters – two with locks
- Stainless steel legs covers
- Special height legs
- Steam injection
- Automatic oven starter
- Draft flue for direct vent (not available on CE units)

### Certifications



# CONVECTION FLOW SERIES GAS DECK OVENS



All Dimensions Nominal

### SHIPPING INFORMATION

Model	Shipping Weights		Carton Dimensions			Crate Size	
	Lbs.	Kilos	Width inches / (mm)	Depth inches / (mm)	Height inches / (mm)	Cubic Feet	Cubic Meter
251	943	428	40 / 1016	53 / 1346	37 / 940	46	1.3
351	1078	493	36 / 915	52 / 1321	72 / 1829	78	2.3
451	1259	571	36 / 915	52 / 1321	72 / 1829	78	2.3

Each oven ships separately  
Hearth Decks and Legs ship in separate cartons  
Shipping Class #85

### GAS SUPPLY

Model	BTUH	KW	CONNECTION
251	60,000	17.6	3/4"
351	70,000	20.5	3/4"
451	80,000	23.4	3/4"

### MINIMUM CLEARANCES

	Noncombustible Construction		Combustible Construction	
	Inches	MM	Inches	MM
Right	0 / 0		1 / 25	
Left	0 / 0		3 / 76	
Rear	2 / 51		3 / 76	

### SPECIFICATIONS

Model	Deck Sizes			Overall Dimensions		
	In.	(mm)	# Decks	Width inches / (mm)	Depth inches / (mm)	Height Inches / (mm)
251	36 x 34 1/2	914 x 876	1	48 / 1219	43 / 1092	55 1/4 / 1403
252	36 x 34 1/2	914 x 876	2	48 / 1219	43 / 1092	66 1/2 / 1689
253	36 x 34 1/2	914 x 876	3	48 / 1219	43 / 1092	81 3/4 / 2076
351	45 x 34 1/2	1143 x 876	1	57 / 1448	43 / 1092	55 1/4 / 1403
352	45 x 34 1/2	1143 x 876	2	57 / 1448	43 / 1092	66 1/2 / 1689
353	45 x 34 1/2	1143 x 876	3	57 / 1448	43 / 1092	81 3/4 / 2076
451	54 x 34 1/2	1371 x 876	1	66 / 1676	43 / 1092	55 1/4 / 1403
452	54 x 34 1/2	1371 x 876	2	66 / 1676	43 / 1092	66 1/2 / 1689
453	54 x 34 1/2	1371 x 876	3	66 / 1676	43 / 1092	81 3/4 / 2076

Height includes 30" (762mm) standard legs on models 251, 351, 451  
Height includes 16" (406mm) standard legs on models 252, 352, 452

Height includes 6" (152mm) legs on models 253, 353, 453  
CE approved units may only be stacked two high